

ALUTECH
GROUP OF COMPANIES



ALT 150

Suspended ventilated
facade system





ALT 150

Suspended ventilated facade system

The ALUTECH ALT150 suspended ventilated facade is a modern way to increase the energy efficiency of the building and reduce the cost of its operation, increase the attractiveness for buyers and tenants, creating more comfortable work and rest conditions. The design features of the ventilated facade allow to extend maintenance-free service life of the building facades.

Thanks to the wide selection of cladding materials used in the ventilated facade, the building can be made unique, at the same time can easily fit into the architecture of any city.

ALT 150

Suspended ventilated
facade system



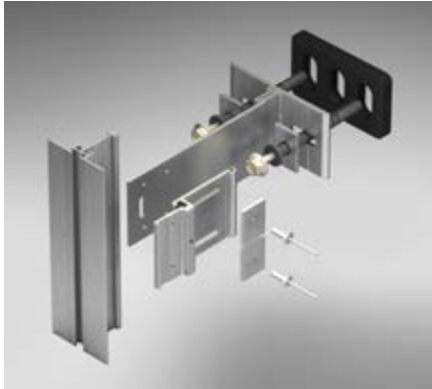
Characteristics

Approved height of use	150 m
Seismic stability	magnitude 9
Thermal insulation thickness	up to 300 mm
Durability	over 50 years

Technical data

- **Aluminium profiles**
Alloy AlMgO,7Si 6063 66.
- **Fastening elements**
Made of aluminium, stainless steel and other corrosion resistant materials.
- **Profiles coating**
Anodizing according to Qualanod requirements.

Types of ALT150 system design



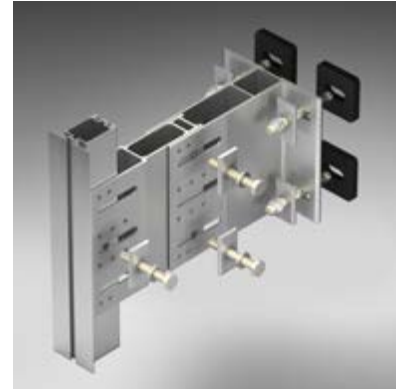
Classic

Mounting to wall



Economy

Mounting to wall



Reinforced (interfloor)

Mounting to floor slabs

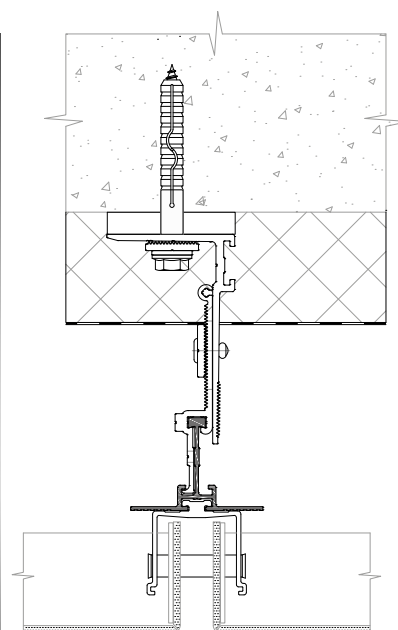
Advantages of suspended ventilated facades ALT150



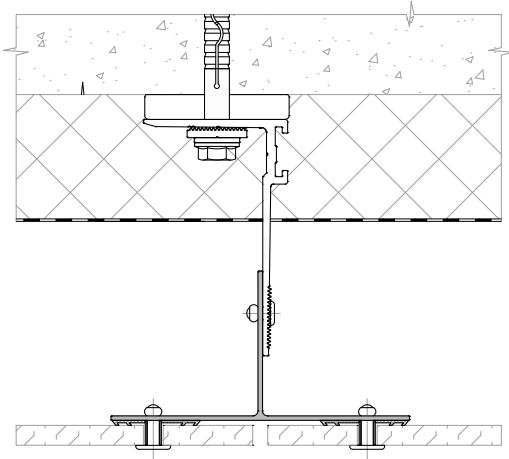
- Various types of cladding materials.
- Possibility to cover building facades of specific shapes.
- Durability (over 50 years).
- Easy assembly, low labor intensity.
- System integration with windows, doors and curtain walls.

Types of cladding materials

Hidden fastening of cassettes made of aluminium composite panels and metals

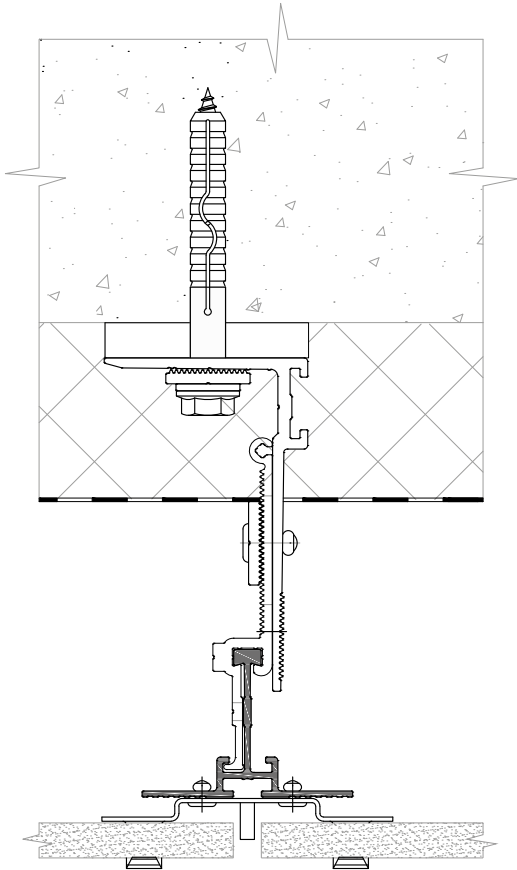


Visible and hidden fastening of sheet materials (fiber cement panels, HPL panels)

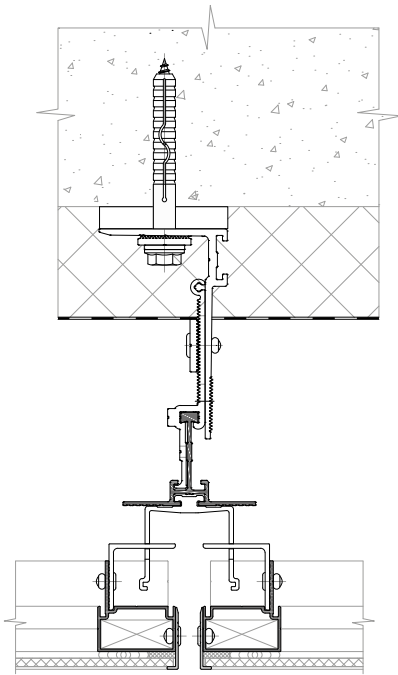


Types of cladding materials

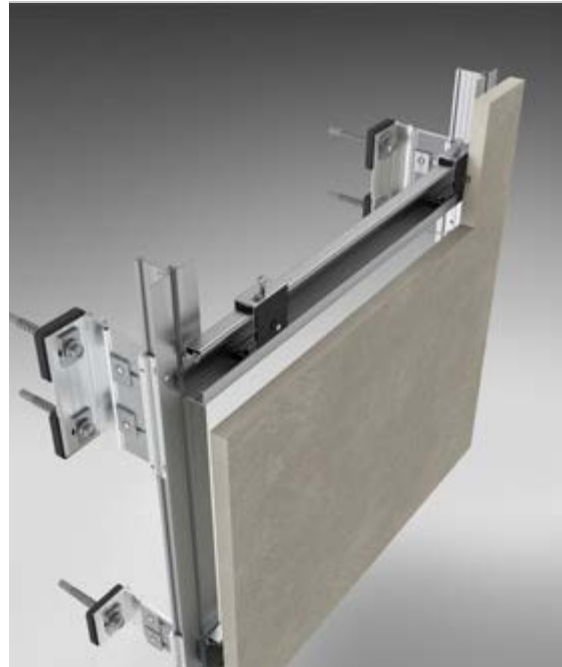
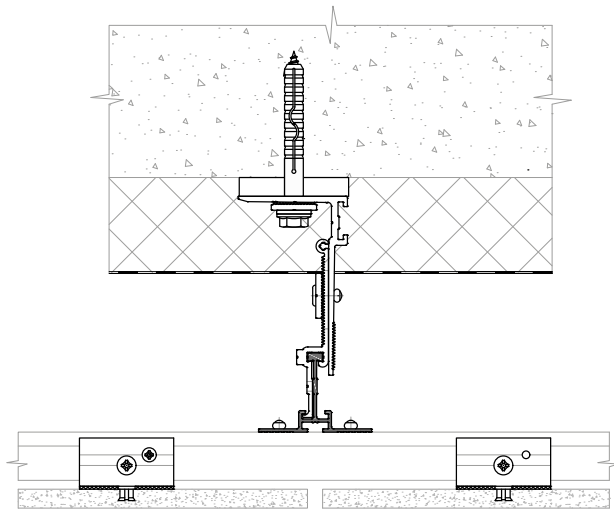
Visible fastening of ceramic granite



Fastening of large-size thin ceramic granite (from 3 mm)



Hidden fastening of ceramic granite, natural stone





ALUMINTECHNO, JLLC

12 Selitskogo str.

220075, Minsk, Belarus

tel.: +375 17 345 81 43/45

fax: +375 17 345 81 48

e-mail: info@alt.by

www.alutech-group.com