

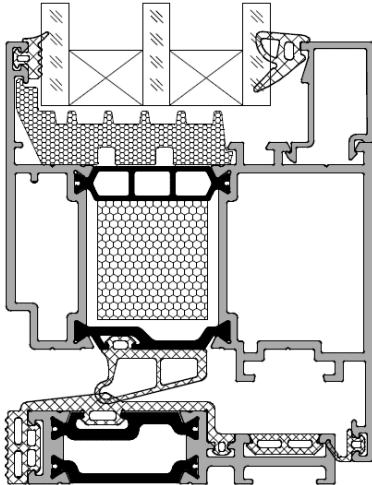
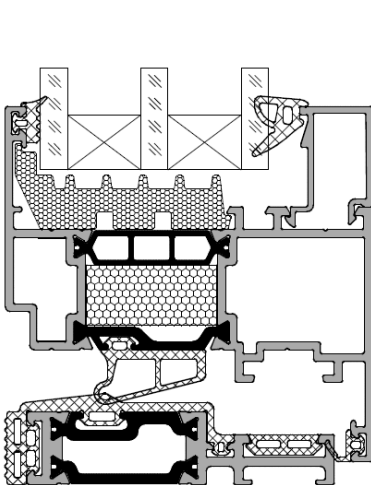
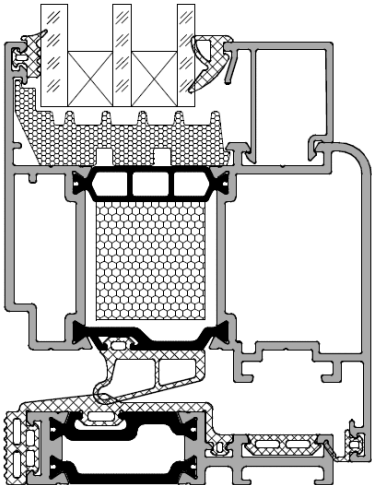
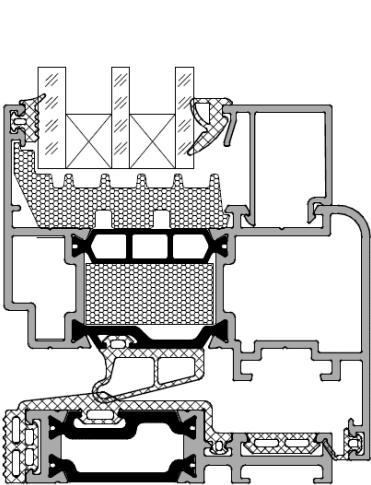
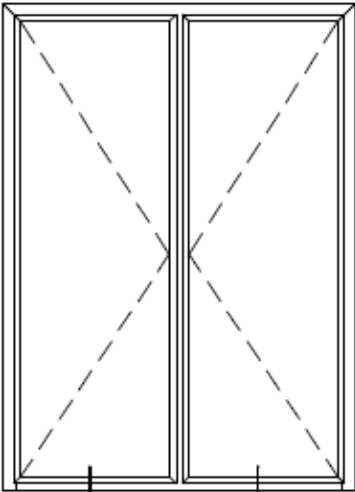
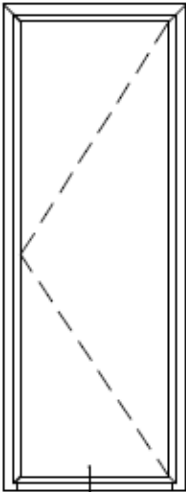
ALT W72 balcony door description

- Used for balcony and terrace entrance;
- Minimal threshold height;
- Different Leaf design;
- Usage of hardware for windows with perimeter locking points



Single leaf door

Double leaf door



Ratings	Performance
High level of noise resistance	Up to 43 dB
Thermal conductivity, Uf	≥ 1,58 W/m ² K
Air permeability	Class 4
Water penetration	Class E1050
Wind pressure	Class CE2400
Maximal sash weight	70 kg/m ²
Frame thickness	72 mm
Sash thickness	80 mm
Maximal glass thickness	50 mm
Maximal Height	Up to 2 500 mm
Maximal width	Up to 1 700 mm

ALT W72 balcony door advantages



- High thermal insulation performance ($U_w \geq 1 \text{ W/m}^2\text{K}$);
- Compliance to EU standard for height of the threshold
- 3 levels of sealing
- Tilt and turn and casements opening types
- EPDM- corners for angles allows to achieve high air and water penetration performance
- Easy and fast fabrication process;
- Assembling of threshold with the help of plastic corners without complicated processing;
- Availability of several leaf types for diverse design;