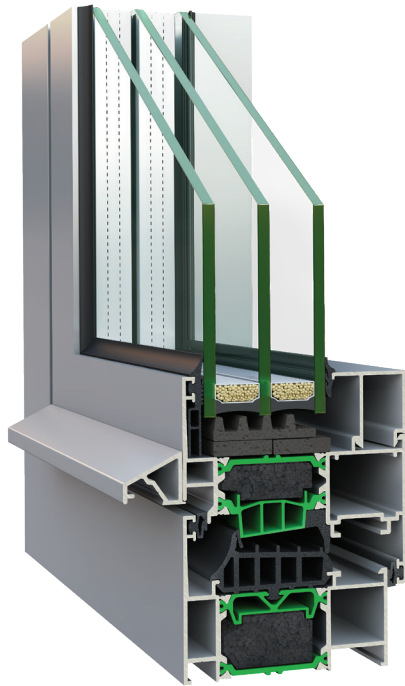


W4750

Tilt & Turn Thermal Insulating System

The most demanding thermal insulation requirements.



System Identity

The ALUMINCO W4750 is a new advanced aluminium system that combines the proven benefits of hinged windows and doors – elegant design and maximum safety - with the highest thermal insulation requirements. Three incomparable advantages, the use of 39 mm reinforced polyamides, the EPDM central gasket and the advanced perimeter locking mechanism, all in one system offer an outstanding Thermal Insulation Index $U_f \geq 1.2 \text{ W/m}^2\text{K}$. It constitutes an ideal solution for high-end residential and commercial projects that require high energy efficient performance with a high degree of design along with top functionality.

Features & Benefits

- Use of glass reinforced polyamides and a foam insulating material, that offer top insulation rate $U_w=1.00 \text{ W/m}^2\text{K}$.
- Visible aluminium face width 102 mm.
- High water tightness performance due to the use of 3-level gaskets and multi chamber EPDM gasket of double extrusion
- The advanced ALU16 locking mechanism offers better safety and high protection.
- Large range of aesthetic solutions, of profiles in straight and curved cross-section with the ability to manufacture all types of openings frames
- Ideal solution for houses and buildings of high energy requirements.

Configurations

Casement windows: 1Leaf - 2Leaf - 3Leaf - 4Leaf

Casement-awning windows: 1Leaf - 2Leaf

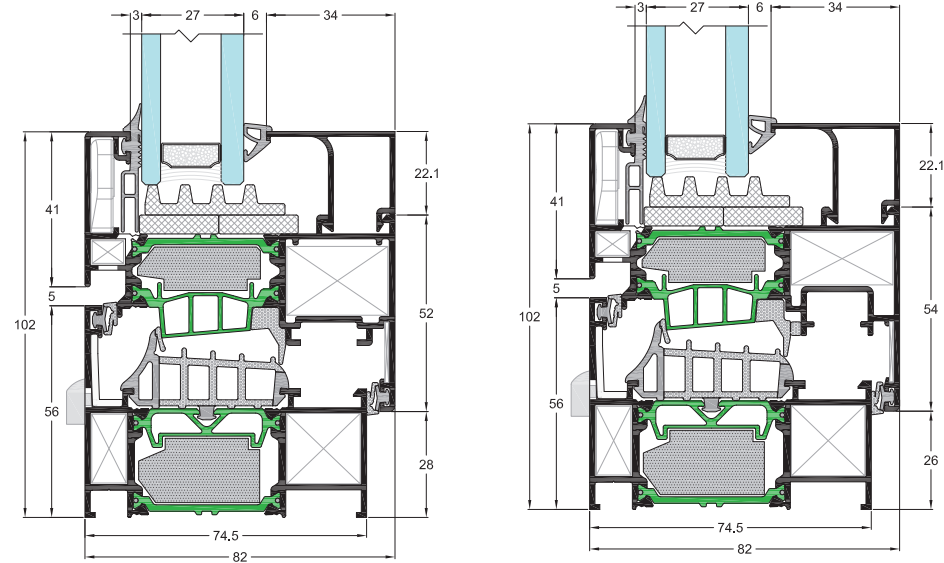
Shutters: 1Leaf - 2Leaf - 3Leaf - 4Leaf

Doors: 1Leaf - 2Leaf - Tilt & Slide (VW)

Angular structure: 90°-224°

Fixed-picture windows

Combinations: 2Leaf sliding SL2450, 2Leaf sliding with insect screen SL200



HARDWARE

CAMERA	CE	ALU 16
--------	----	--------

INSULATION

POLYAMIDES mm	39	39
FOAM	•	•

SYSTEM PROFILE DIMENSIONS

MIN. FRAME DEPTH mm	74.5	74.5
MIN. FACE HEIGHT mm	102	102
GLASS THICKNESS mm	21-66	21-66

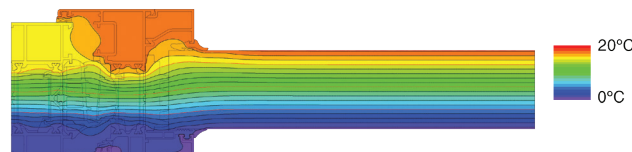
CONSTRUCTION DIMENSIONS

SASH WIDTH mm	365-1600	360-1490
SASH HEIGHT mm	360-2400	450-2360
MAX. SASH DIMENSIONS mm (WxH)	1600x2100 / 1300x2400	1490x2100 / 1300x2360
MAX. SASH WEIGHT Kg	130, 150*, 200**	130, 150*, 200**

CERTIFICATES/PERFORMANCES

AIR PERMEABILITY EN 12207	Class 4	Class 4
WATER TIGHTNESS EN 12208	Class 8A	Class 8A
RESISTANCE TO WIND LOAD EN 12210	Class C3/B3	Class C3/B3
THERMAL INSULATION U_f EN ISO 10077-2	1.2-2.3 $\text{W/m}^2\text{K}$	1.2-2.3 $\text{W/m}^2\text{K}$

*Reinforced Tilt and Turn | **Hinged with heavy duty hinges



Rate of Insulation

$U_w=1.0 \text{ W/m}^2\text{K}$

Thermal conductivity coefficient has been calculated for the construction: 1230x1480 with $U_g=0.6 \text{ W/m}^2\text{K}$
Glass type: 44 mm=4+16+4+16+4



FLAT CURVED